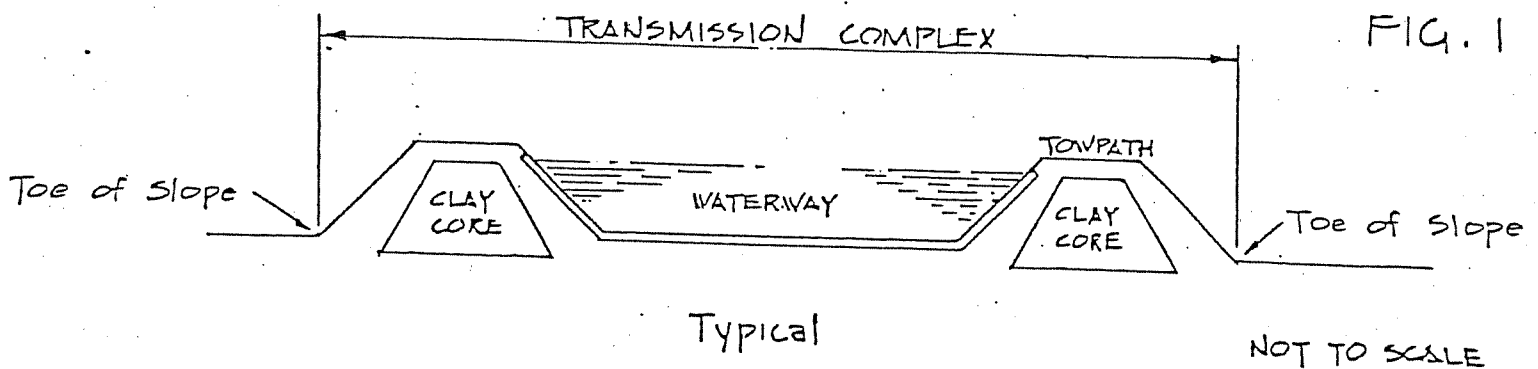


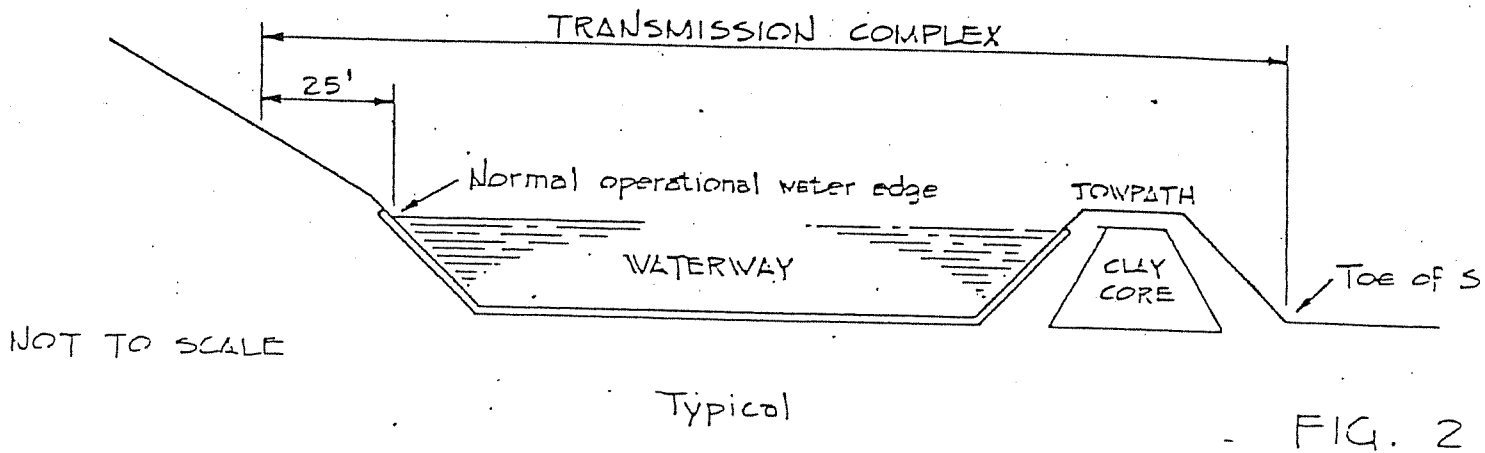
THE D & R CANAL WATER TRANSMISSION COMPLEX -  
LANDS TO BE LEASED

Description: The D & R Canal Water Transmission Complex "facilities" shall include the waterway, embankments, flood guard banks, hydraulic and flow control structures, and land necessary to operate and maintain the Canal as a water supply system. The limits of the property "lease line" for the Transmission Complex shall be defined by the following Conditions and Special Conditions and shown on the delineation maps.

Condition I: The D & R Canal Transmission Complex property "lease Line" shall include the waterway and embankments from "toe of slope" to "toe of slope" assuming that it is entirely within State property (fig. 1).



Condition II: Where a "toe of slope" does not exist at one or both embankments, then the Transmission Complex property "lease line" shall be limited to a distance of  $\pm 25$  feet perpendicular from normal operational water edge on that side(s) (fig. 2, 3, & 4).



Special Conditions: Where any of the following Special Conditions occur before reaching the proposed limit line as described by the preceding Conditions, then the limit of the property "lease line" would end at the applicable closest Special Condition.

- (a) The State property line
- (b) a roadway right-of-way
- (c) the multi-use trail on the abandoned RR line on the non-towpath side, north of Prallsville. (At the request of P & F.)
- (d) 10 feet from a State-owned dwelling unless otherwise indicate on delineation maps (at the request of P & F). (See fig. 6, 7, & 8)

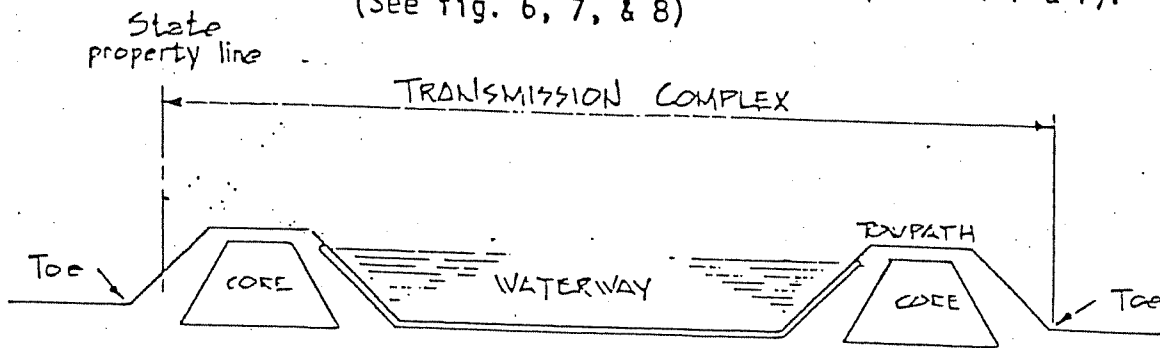


FIG. 6

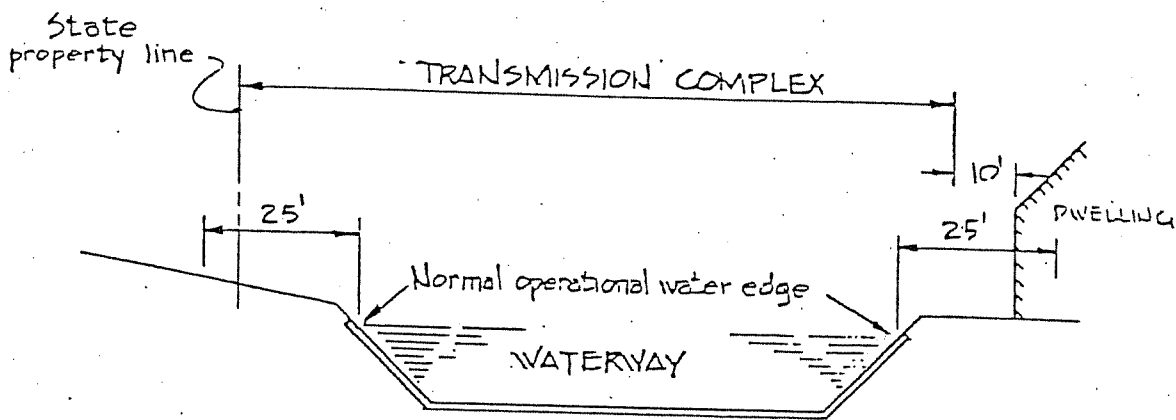


FIG. 7

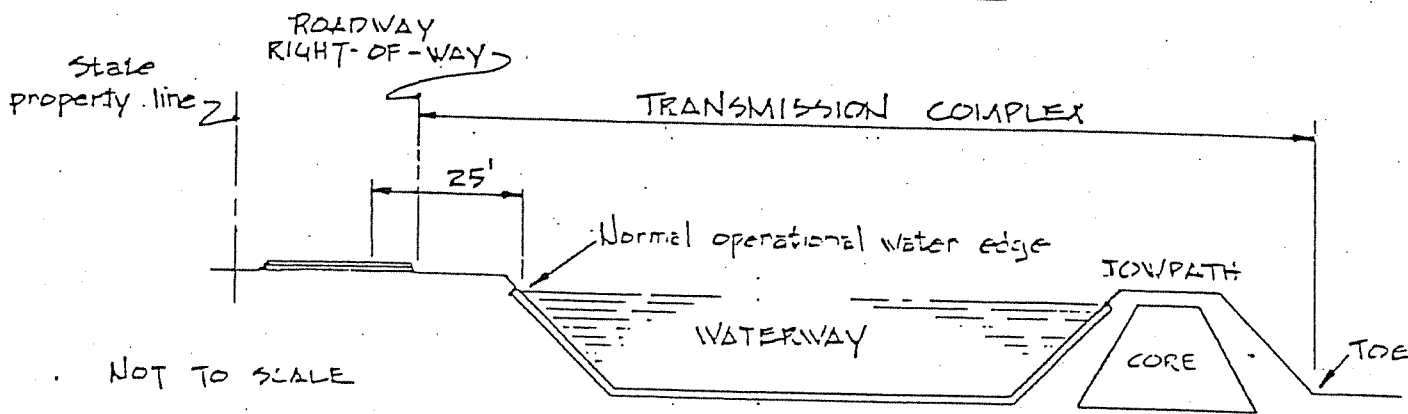


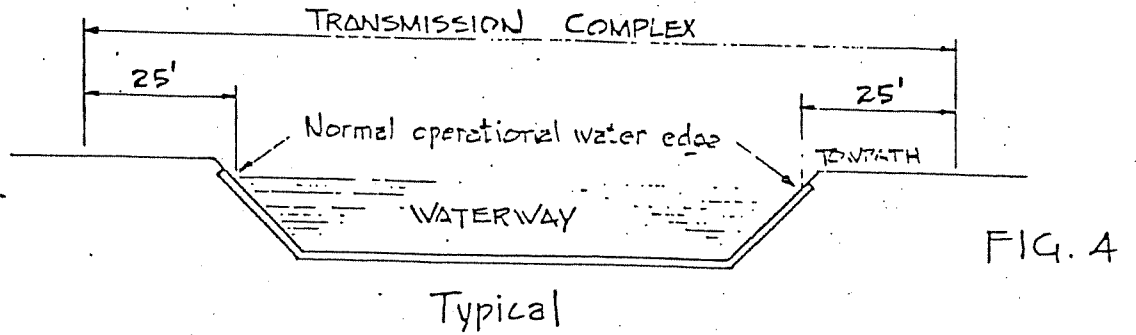
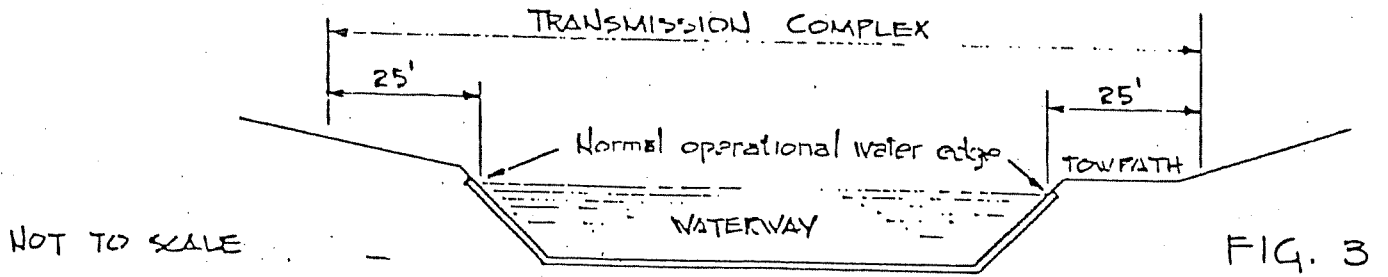
FIG. 8

NOT TO SCALE

Additionally, in conformance with the applicable descriptions noted herein, land on the discharge side of spillways and waste gates to the State property line shall also be considered as part of the Transmission Complex property.

Where small land segments, impractical to separately administer and maintain are created by the application of the limits described herein, the "lease line" shall then be extended to include these lands.

Condition II (Continued):



Condition III: Where a flood guard bank exists concurrently with the towpath, the limit shall include the flood guard bank to "toe of slope" assuming that it is entirely within State property (fig. 5).

